



Control System Retrofit at..



Since 1967 the company Hasit GmbH & CO. KG has become an expansively growing group of firms in the course of the years. Today the head office in Freising controls the production of building materials in the eight manufacturing plants Eichenkofen, Untermarchenbach, Kissing, Regensburg, Schwarzenfeld, Crossen (Thüringen), Nürnberg and Harburg.

The production control system in the different plants could not any longer meet today's requirements of traceability of production, flexibility with plant extensions and availability of spare parts and had to yield to a control system, appropriate to today's state of the art. Regarding the forthcoming connection to the new PPS (SAP), the new production control should bring along the technical apparatus for an integration into this system too. In the final result the automation potential is not only to be used optimally in production but also in the job execution.

Schmid Automation has been assigned to replace the existing process control system and visualization completely with a modern control system and to realize the appropriate conversions (software and reconstruction of the switchgear cabinets) with minimum interruptions of production. Thanks to perfect planning and short realization times from the kick off meeting to the end of the commissioning we could live up to these high requirements in its entirety.

With the use of a uniform control system and likewise a uniform operating surface the flexibility concerning assignment of service personnel in different plants is thus increased enormously.

Our Services

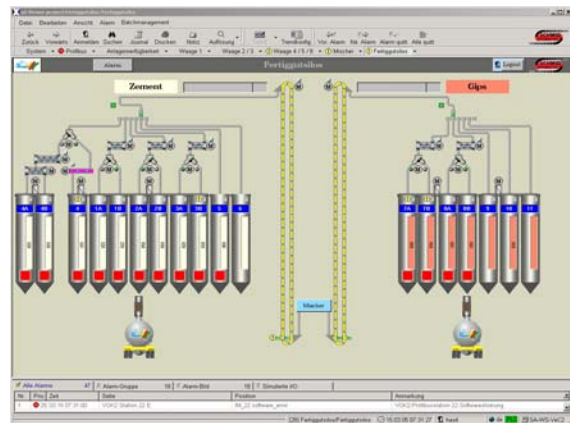
- providing product requirement specifications
- concept development for central storing of the prescription and production data in the head office in Freising
- programming of the entire software for weighing and dosing
- project engineering of visualization
- programming of the bus interface on the existing periphery by means of PROFIBUS-DP
- completely new creating and revision of electrical diagrams (EPLAN)
- rebuilding of the existing switchgear cabinets
- replacement of periphery assembly groups, the manufacturer has already announced discontinuation for
- replacement of the old balancing processors by SIWAREX - processors
- commissioning within the demanded time
- production monitoring, briefing, optimizations



..and what else is needed for building..

Plant Configuration

- server in cold-stand-by design with 2 Client connections with double monitor for a clear and easy operation
- S88-Batch-Control
- Connection of 700 I/O by PROFIBUS-DP
- complete replacement of the entire switchgear combinations for the electrical control and service section
- new creation of the entire electrical documentation and integration into the control system



End-Product Silo



Control room during the reconstruction



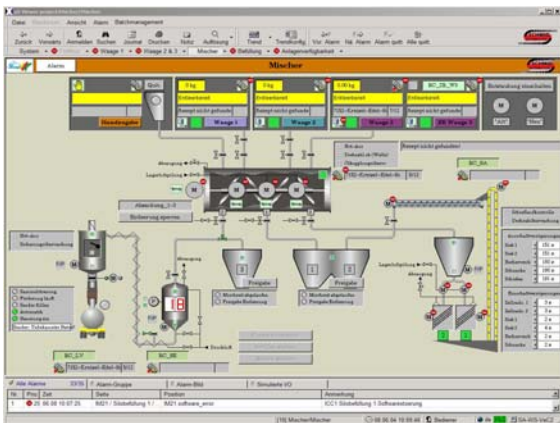
Finalized Control room





Plant Configuration

- server in cold-stand-by design with 2 Client connections with double monitor for a clear and easy operation
- S88-Batch-Control
- Connection of 1100 I/O by PROFIBUS-DP
- Connection of the weighing device by SIWAREX M
- complete replacement of the entire switch-gear combinations for the electrical control and service section
- new creation of the entire electrical documentation and integration into the control system



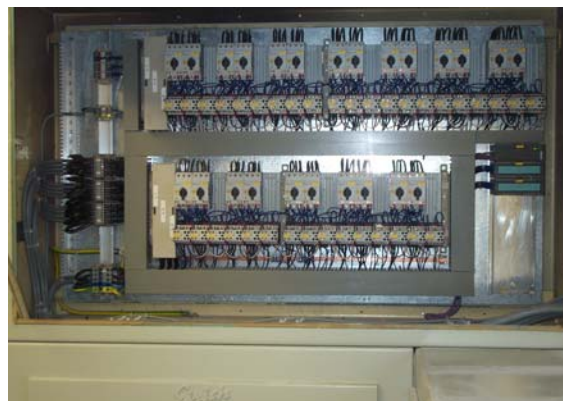
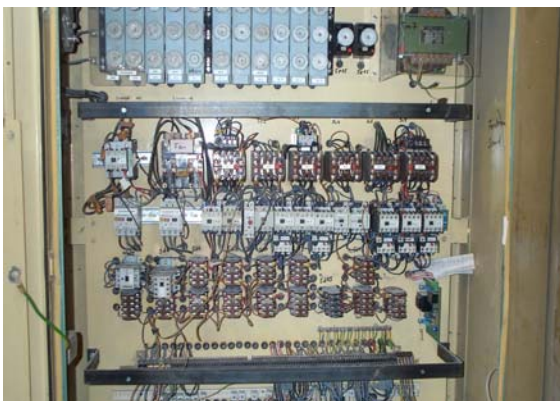
Mixer Overview



Control room before reconstruction

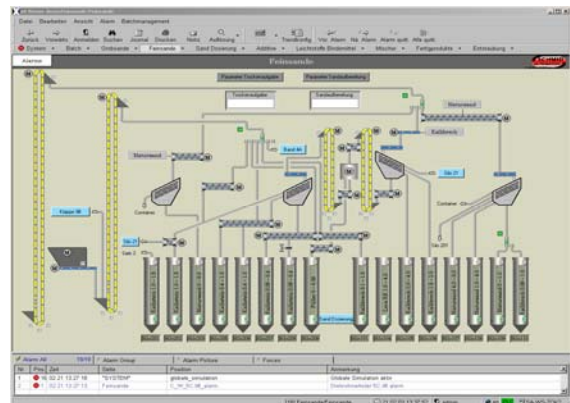


Control room after reconstruction



Plant Configuration

- server in cold-stand-by design with double monitor for a clear and easy operation
- S88-Batch-Control
- Connection of 1600 I/O by PROFIBUS-DP
- Connection of the weighing device by SIWAREX M
- bar code reading unit with reader and printer for truck identification
- new creation of the entire electrical documentation and integration into the control system

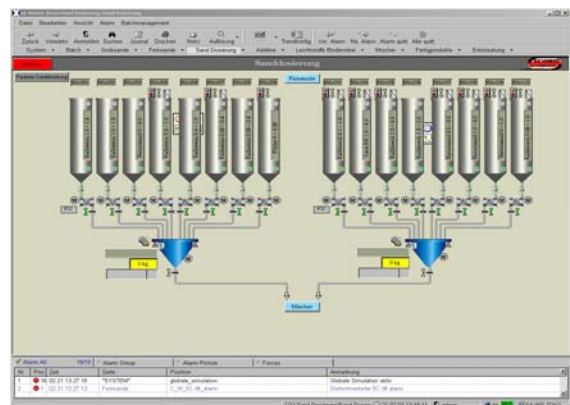


Sand Treatment

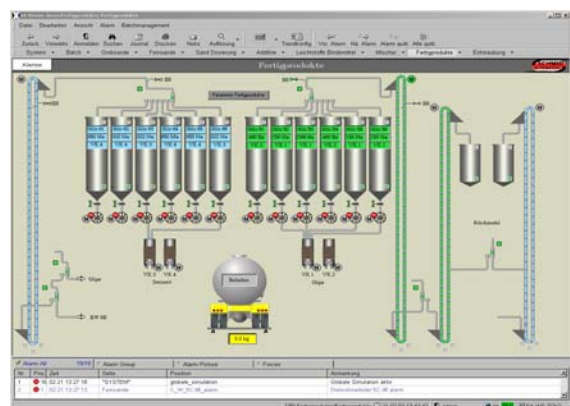


Control room before reconstruction

Control room after reconstruction



Weighing / Dosing



Loading

In compliance with your wishes, we realize process engineering subprocesses as well as entire plants for ready occupancy from the planning to the after sales service.

SCHMID AUTOMATION AG, CH-9001 St.Gallen

Moosmühlestr. 8
CH-9001 St. Gallen

T +41 (0)71 272 33 40
F +41 (0)71 272 33 30
www.schmidag.ch

SCHMID AUTOMATION GMBH, D-86154 Augsburg

Hirtenmehdweg 10
D-86154 Augsburg

T +49 (0) 821 218 39 60
F +49 (0) 821 218 39 57
www.schmid-automation.de



A Company of the FILTROX-Group

