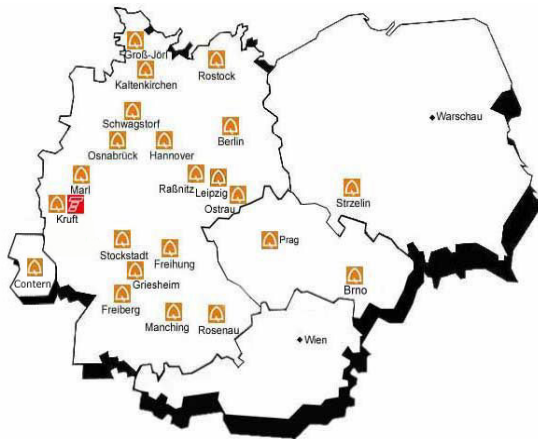




quickly mixed at..



The quick-mix group, with headquarters in Osnabrück, Germany, has been developing and selling high-quality dry building materials for the entire construction industry for over 30 years. With success, since its foundation, quick-mix is regarded as a pioneer in the dry mortar development and continues to live up to this reputation today.

quick-mix products are manufactured at 20 production plants spread throughout Germany, Poland and the Czech Republic. Through permanent research, constant product improvement and analyses in the in-house labs the constant quality is ensured.

The production control systems in older plants had to be brought up to today's requirements of traceability of production, flexibility with plant extensions and availability of spare parts. Therefore, they had to yield to a control system, appropriate to today's state of the art.

The central recipe administration for all quick-mix plants, the possibility to integrate third party control systems and last but not least the very high standards of availability and operator convenience required a modern control system which is far ahead of other systems regarding overall flexibility.

Schmid Automation has been assigned to replace the existing process control system and visualization completely with a modern control system and to realize the appropriate conversions (software, reconstruction of the switchgear cabinets and electrical installations) with minimised interruptions of production. Thanks to perfect planning and short realization times from the kick off meeting to the end of the commissioning we could live up to these high requirements in its entirety.

By using a uniform control system and likewise a uniform operating surface, the flexibility concerning assignment of service personnel in different plants was increased enormously.

## Our Services

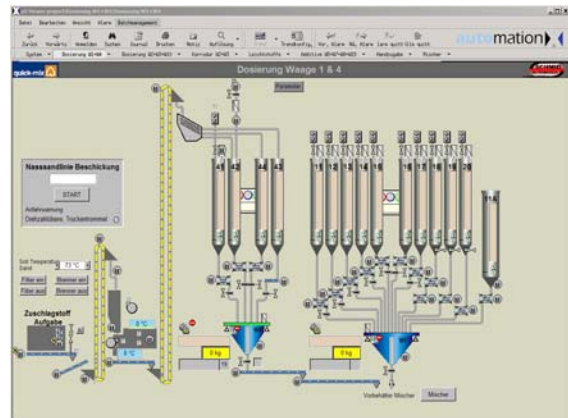
- providing product requirement specifications
- concept development for central storing of the recipe and production data in the head office in Osnabrück
- automatic recipe transfer via WAN (wide area network) to the production plants
- programming of the entire software for weighing and dosing
- project engineering of visualization
- completely new creation and revision of electrical diagrams (EPLAN)
- rebuilding of the existing switchgear cabinets
- completely new electrical installations
- commissioning within the demanded time
- production monitoring, briefing, optimizations



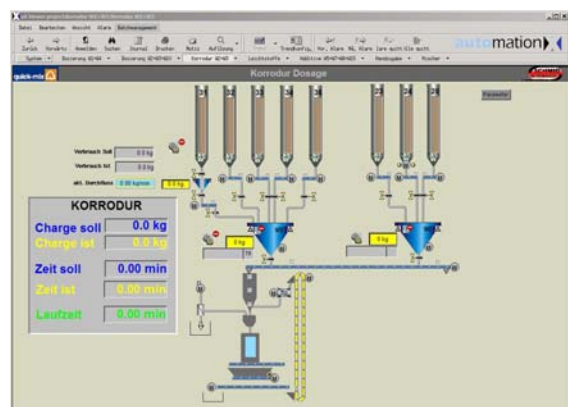
## First quick-mix plant, modernised by Schmid Automation

### Plant Configuration

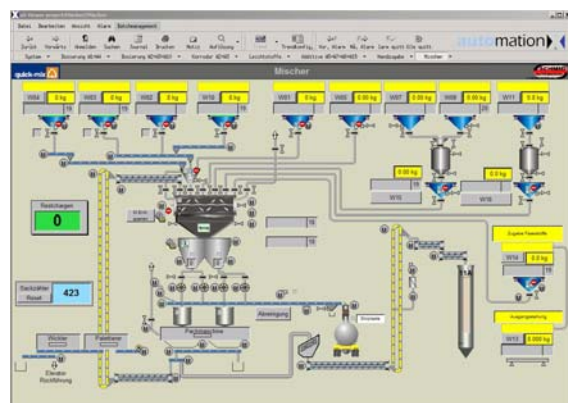
- Server in cold-stand-by design with 6 operator stations, each with double monitor for a clear and easy operation
- S88-Batch-Control with batch tracing according to global standard S88
- Connection of more than 1500 I/O by PROFIBUS-DP
- Connection of the weighing device by SIWAREX
- Bar code reading unit with reader and printer for controlled manual addition of pre-weighed components
- New creation of the entire electrical documentation and integration into the control system



*Sand Treatment*

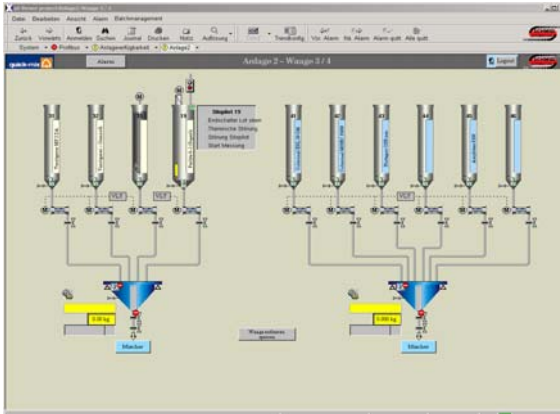


*Korrodur Dosage*

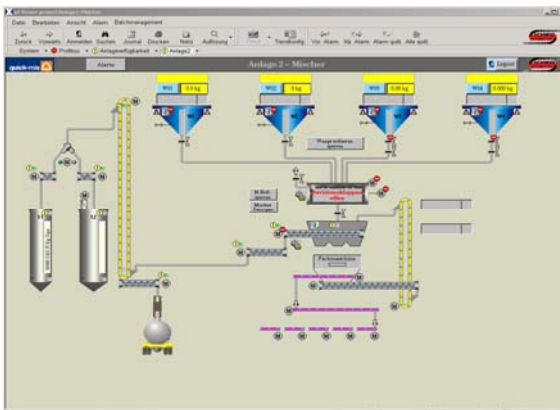


*Plant Overview*

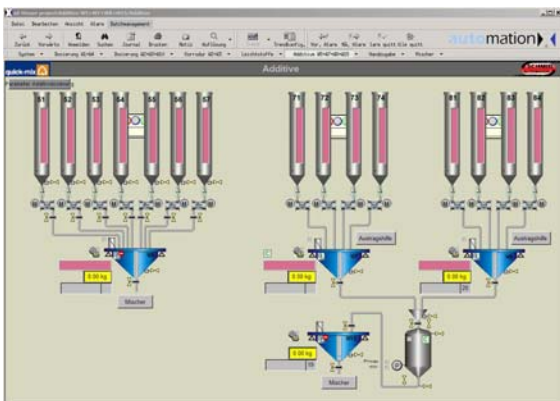




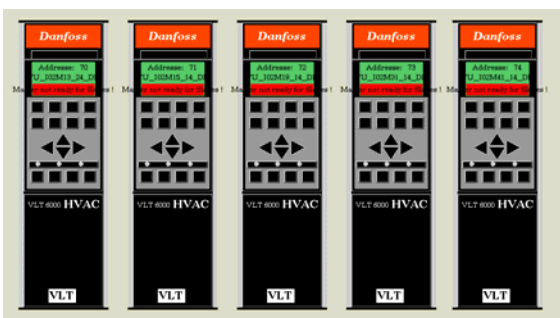
Dosing



Mixer Overview



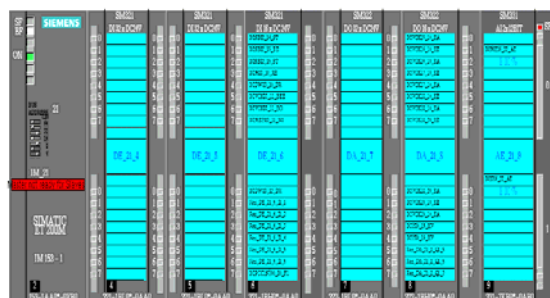
Additives



## Second quick-mix plant, modernised by Schmid Automation

### Plant Configuration

- Server in cold-stand-by design with 3 operator stations, each with double monitor for a clear and easy operation
- Connection to quick-mix LAN (local area network) in order to use existing PC´s as operator stations
- S88-Batch-Control
- Connection of more than 1000 I/O by PRO-FIBUS-DP
- Connection of the weighing device by SIWAREX
- Complete exchange of all switch gear cabinets
- New creation of the entire electrical documentation and integration into the control system



---

## Energy Optimisation

In one quick-mix plant, Schmid Automation has successfully installed a humidity measurement system in order to optimise the energy consumption. The system measures the humidity of the sand which has to be dried and accordingly optimises the energy supply needed for drying.

The implemented procedure paid off very quickly, since the sand is now being heated to an average temperature which is 10° lower than before. The financial benefit of this optimisation is obvious.

Moreover, such action can help to meet rigorous environment obligations in the future right in time.



## Electrical Installation

All the electrical installations in both plants, which had been modernised by Schmid Automation, are completely new built.

In order to minimise interruptions of production, the new installations have been made while the plants were in operation. This allowed to run the two plants with the new electrical installations within less than a week.



In compliance with your wishes, we realize process engineering subprocesses as well as entire plants for ready occupancy from the planning to the after sales service.

---

### SCHMID AUTOMATION AG, CH-9001 St.Gallen

Moosmühlestr. 8  
CH-9001 St. Gallen

T +41 (0)71 272 33 40  
F +41 (0)71 272 33 30  
[www.schmidag.ch](http://www.schmidag.ch)

### SCHMID AUTOMATION GMBH, D-86154 Augsburg

Hirtenmahdweg 10  
D-86154 Augsburg

T +49 (0) 821 218 39 60  
F +49 (0) 821 218 39 57

[www.schmid-automation.de](http://www.schmid-automation.de)



A Company of the FILTROX-Group

