



## Most modern Process Control System guarantees quality Beer in Hungary



### Brewery Martfu

The second brewery of BRAU UNION Hungária, the Martfu brewery, is one of the younger breweries in Hungary. The thought of a new brewery arose in 1981. As a result, 28 production cooperatives and state goods of east Hungary created the brewery Martfu, in order to remedy the lack of beer. In the proximity of Szolnok, production started in 1985. 1993 a license agreement was signed for the brands Kaiser and Schwechater. Nowadays in Martfu, there is more than 500'000 hectolitre beer brewed per year.

The fully automatic plant control with Siemens Coros LS-B for the beer filtration could not any longer meet today's requirements to the availability of production and to the flexibility with plant extensions.

Schmid Automation AG was therefore assigned to replace the existing process control system as well as the visualization for the filtration process with a modern control system. For reasons of minimising losses of production time, there was only very little time available for the installation of the new control system and the appropriate conversion. The Simatic S5 process interface equipment was retained, which entailed cost savings apart from the shortened turn-around time.

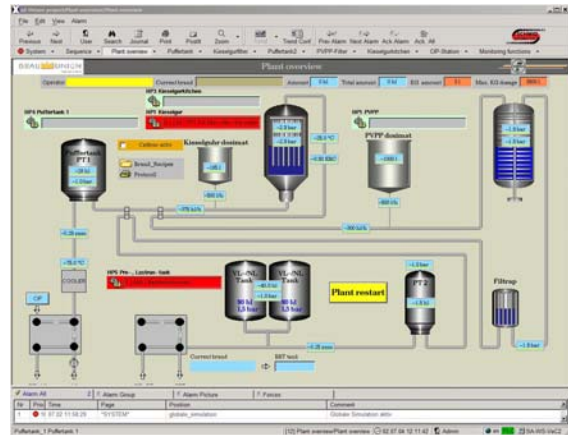
### Our services

- Delivery and installation of server and operator stations.
- Programming of process software and visualisation for fully automatic Kieselguhr- and PVPP Filter plant based on ANSI / ISA – S88 Standard.
- Online - language shift English / Hungarian
- Test and simulation at the customer's prior to the retrofit.
- Training of the operators and the maintenance staff.
- Rebuilding, recommissioning and optimisation within only 5 days, followed by the final acceptance through the customer

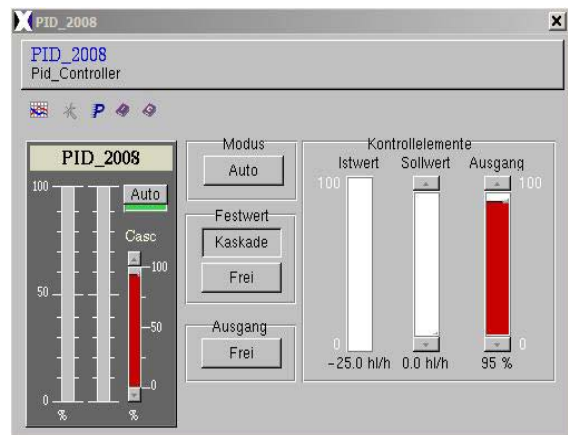


## Plant Configuration

- AutomationX: Software for controlling, visualisation and production data acquisition in one single system
- 1 Server Windows 2000
- 2 Client Windows XP as operator station
- Network TCP/IP
- Connection of the input and output signals by PROFIBUS-DP
- Remote maintenance of servers and operator stations



*Plant Overview*



*PID Controller*



In compliance with your wishes, we realize process engineering subprocesses as well as entire plants for ready occupancy from the planning to the after sales service.

### **SCHMID AUTOMATION AG, CH-9001 St.Gallen**

Moosmühlestr. 8  
CH-9001 St. Gallen  
T +41 (0)71 272 33 40  
F +41 (0)71 272 33 30  
www.schmidag.ch

### **SCHMID AUTOMATION GMBH, D-86154 Augsburg**

Hirtenmehdweg 10  
D-86154 Augsburg  
T +49 (0) 821 218 39 60  
F +49 (0) 821 218 39 57  
www.schmid-automation.de



A Company of the FILTROX-Group

