



700 years old quality beer meets most modern Process Control System



Brewery České Budějovice

The modern history of the brewery Budějovický Budvar and its famous Budweiser beer, whose history dates back to the 13th century, started in 1967, when the Czech Republic's Ministry of Agriculture founded the brewery as a state enterprise and as a direct successor to Český akciový pivovar, which had been brewing beer in České Budějovice since 1895, upholding a more than 700 years old tradition of beer brewing in České Budějovice.

Today, the brewery Budějovický Budvar owns valuable intellectual property in the form of more than 380 trademarks registered in 101 countries. The best-known trademarks are Budweiser, Budvar, Budweiser Budvar, Bud, Budějovický Budvar, and Czechvar

The brewery's fully automatic control system for the beer filtration with Coros LS-B from Siemens could not meet anymore nowadays requirements to the availability and security of production as well as to the flexibility with plant extensions

Schmid Automation AG was therefore assigned to replace the existing process control system and the visualization for the whole filtration process with a modern control system. For reasons of minimising losses of production time, there was only very little time available for the installations and the appropriate conversions. The Simatic S5 process interface equipment was retained, which entailed cost savings apart from the shortened turn-around time.

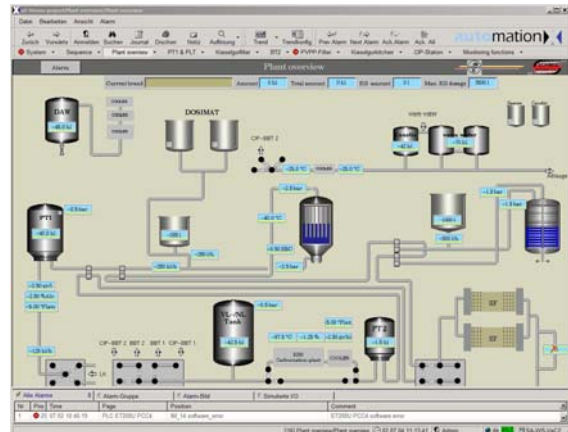
Our services

- Delivery and installation of server and operator stations
- Programming of process software and visualization for fully automatic Kieselguhr- and PVPP filter plant
- Online – language shift English / Czech
- Test and simulation at the customer's prior to the retrofit.
- Training of the operators and the maintenance staff.
- Rebuilding, recommissioning and optimisation within only 5 days, followed by the final acceptance through the customer

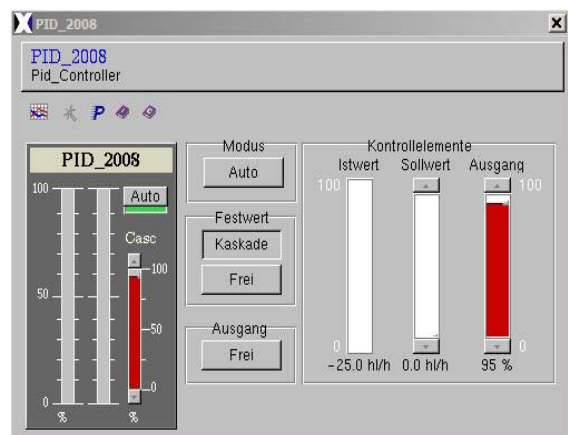


Plant Configuration

- Brewery specific software for controlling, visualisation and production data acquisition in one single system
- 1 Server Windows 2000
- 2 Clients Windows XP as operator stations
- Network TCP/IP
- Connection of the input and output signals by PROFIBUS-DP
- Remote maintenance of servers and operator stations



Plant Overview



PID Controller



In compliance with your wishes, we realize process engineering subprocesses as well as entire plants for ready occupancy from the planning to the after sales service.

SCHMID AUTOMATION AG, CH-9001 St.Gallen

Moosmühlestr. 8
CH-9001 St. Gallen
T +41 (0)71 272 33 40
F +41 (0)71 272 33 30
www.schmidag.ch

SCHMID AUTOMATION GMBH, D-86154 Augsburg

Hirtenmahdweg 10
D-86154 Augsburg
T +49 (0) 821 218 39 60
F +49 (0) 821 218 39 57
www.schmid-automation.de



A Company of the FILTROX-Group

