



..something delicious happens..



Plant Herzogenbuchsee

The trade mark Melior stands for high quality human food and agrarian feeds for small and home animals. These products are produced by Häfliger AG in 3 plants. The daily output adds up to 1700 tons.

Häfliger AG meets almost all special desires in connection with the milling for human food. Again and again it is necessary to intensively look for new solutions, in order to allow the customers to integrate grain and leguminous plants in new forms into their recipes.

For the retrofit in automation, the possibility of complete material back-tracing from the raw material supplier to the bag with packaged finished product (IFS and BFC standards) provided with bar code, was also extremely important.

Yield evaluations of the different treatment processes, such as peeling or rolling were to complete the overall functions of the plant.

As with earlier projects of Häfliger AG, Schmid Automation was placed with an order for software programming, construction of the control cabinets and the entire electrical installation.

Perfect preparation and coordination of the pending tasks are required in order to be able to realize the retrofit of a plant of this dimension during ongoing production.

Schmid Automation AG has exceeded once more all the expectations of Häfliger AG in its entirety.

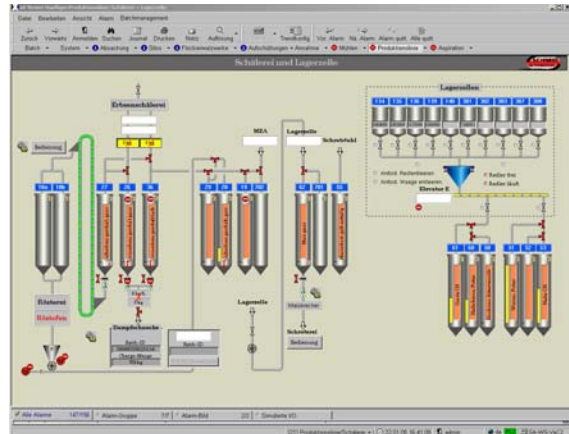
Unsere Leistungen

- Development and creation of the system specifications
- Programming of the entire software for:
 - weighing and dosing
 - flaking lines
 - filling lines
 - peeling, rolling
 - mills
 - raw material filling
- Project engineering of visualization
- Programming of the coordination for data transfer between several and different third party control systems
- Construction of control cabinets
 - 25 MCC
 - 40 LCC
- Hardware planning of the control cabinets and the electrical installation
- Production supervising, instructions, optimizations

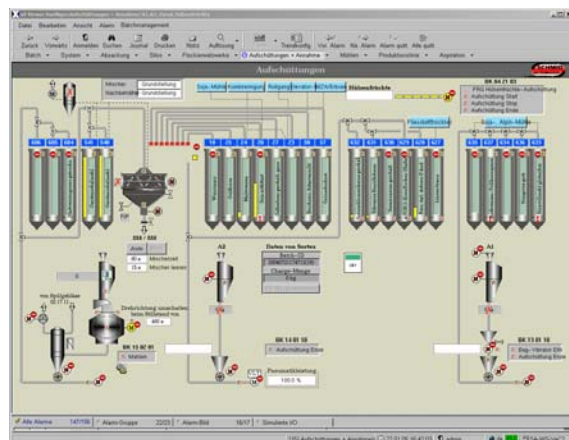


Anlagenkonfiguration

- Server
- Cold-Stand-By-Server
- Data base-Server with evaluations of product exploitation and complete back-tracing of the used material
- 5 operator stations, thereof 2 with split screen-technology
- automationX with S88-Batch-Control
- Connection of more than 2000 I/O via PROFIBUS-DP to the control software with more than 100 PROFIBUS-DP-interfaces
- Connection of all flowbalancers, frequency converters and third party control systems via PROFIBUS-DP, Ethernet TCP/IP, RS232
- Integration of the complete electrical diagram into the visualisation
- Most modern visualisation for optimal plant overview
- Simple and clear operation for efficient use by operators
- Use of most modern PC-technology and sophisticated operating systems



Storage Silos Peeling



Loading of Silos



In compliance with your wishes, we realize process engineering subprocesses as well as entire plants for ready occupancy from the planning to the after sales service.

SCHMID AUTOMATION AG, CH-9001 St.Gallen

Moosmühlestr. 8
CH-9001 St. Gallen

T +41 (0)71 272 33 40
F +41 (0)71 272 33 30
www.schmidag.ch

SCHMID AUTOMATION GMBH, D-86154 Augsburg

Hirtenmehdweg 10
D-86154 Augsburg

T +49 (0) 821 218 39 60
F +49 (0) 821 218 39 57
www.schmid-automation.de



A Company of the FILTROX-Group

