



## Modern Control System for Spanish Malt at..



### Intermalta S.A., San Adrián

On 22 July 1977 in San Adrián, the hour of birth strikes for the company Intermalta. Particularly for the farmers of Navarra Region, the new malthouse became the principal client for barley. In the following years, Intermalta conquered more and more market shares on the Spanish malt market and was finally able to add a fourth production line to the three existing ones. Thus the output of finished malt rose by 33% up to 140.000 tons a year.

Schmid Automation AG was assigned to automate the new production line D. A modern control system should be used, which meets today's requirements in food industry to the traceability of production, flexibility with plant extensions as well as the needs of the in-house controlling-department.

After a successful start-up of plant D, for reason of the availability of spare parts, the outdated PLC SIMATIC S5-150 of the plant C was replaced by new SIMATIC S7 components and likewise connected to the SCADA System WinCC.

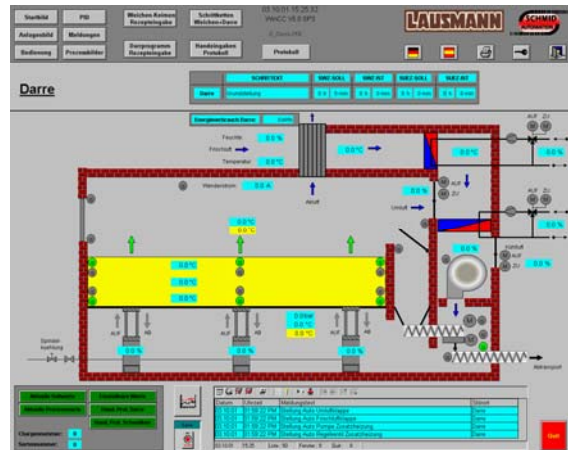
### Unsere Leistungen

- Process control system WinCC for operating and observing, stock management and statistics, batches and administration of jobs, with operating and breakdown reporting archives as well as remote maintenance
- PLC program SIMATIC S7
- Electrical Engineering
- Production of partially type tested switch-gear combinations. 21 pieces MCC, 22 pieces PCC for plant D
- Supervising electrical installations plant D
- Reconstruction, re-commissioning and optimisation of plant C with following acceptance by the customer

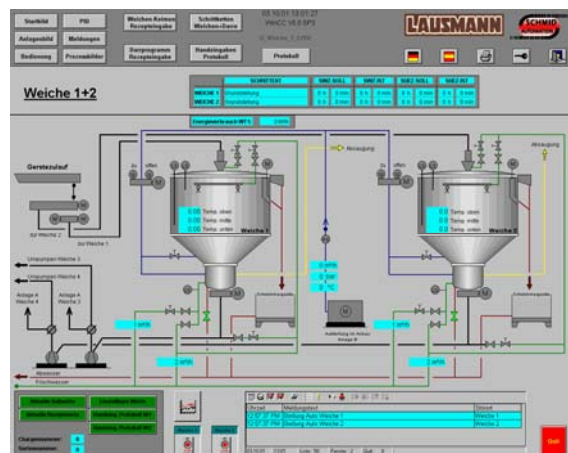


## Anlagenkonfiguration

- SCADA System WinCC with PM Quality
- 1 Server with harddisk Raid 1 as operator station
- Remote maintenance
- 4 modes of operation: fully automatic, remote hand, local hand and emergency hand
- PLC program Simatic S7-400 with approx. 2900 digital and analogue I/O
- Connection of the I/O by PROFIBUS-DP
- frequency steered kiln ventilator 315kW with emergency star – triangle circuit



Kiln



Step 1 and 2



In compliance with your wishes, we realize process engineering subprocesses as well as entire plants for ready occupancy from the planning to the after sales service.

### SCHMID AUTOMATION AG, CH-9001 St.Gallen

Moosmühlestr. 8  
CH-9001 St. Gallen  
T +41 (0)71 272 33 40  
F +41 (0)71 272 33 30  
www.schmidag.ch

### SCHMID AUTOMATION GMBH, D-86154 Augsburg

Hirtenmahdweg 10  
D-86154 Augsburg  
T +49 (0) 821 218 39 60  
F +49 (0) 821 218 39 57  
www.schmid-automation.de



A Company of the FILTROX-Group

