



## New heart for Silo Plant at..



### Plant Herzogenbuchsee

UFA AG is the leading company for animal feed in Switzerland. With the trade mark UFA the company produces and sells compound feeds, specialities and services for the livestock owner. UFA AG provides for Swiss tillers a good selling of their grain and for livestock owners high-quality compound feeds. The compound feeds are produced in four different locations spread over Switzerland.

The plant in Herzogenbuchsee is the biggest plant for compound feeds in Switzerland. It processes 20% of Swiss grain to 275'000 tons compound feeds per year.

The required cereal for the processing is provided in separate silo plants. At peak-periods, up to 2000 tons of grain are turned over in one single day.

The silo plant 3 consists of 136 grain silos. Schmid Automation AG has been assigned to modernize the control system as well as to retrofit the electrical installation in order to provide the plant with a new heart which can guarantee the availability and flexibility of the plant to handle the enormous amount of grain.

For the modernisation it was in particular important to realize a complete back-tracing to the raw material supplier and to program the simultaneous stockpiling, stock transfer and stock removal of the grain. This happens through automatic identification and suggestion for possible simultaneous source-destination-traces among the 136 silos.

Perfect preparation and coordination of the pending tasks are required in order to be able to realize the retrofit of a plant of this dimension and to minimise the plant downtime. Schmid Automation AG has exceeded once more all the expectations in their entirety.

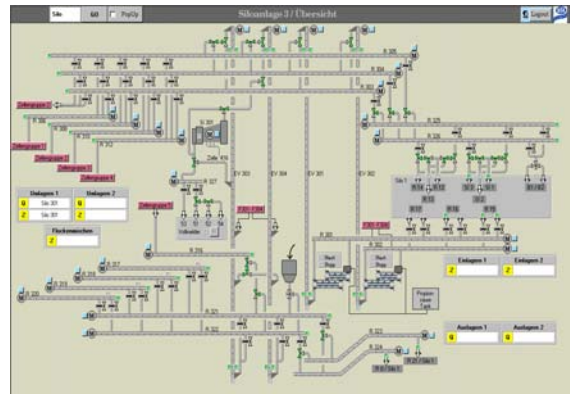
### Our services

- Development and creation of the system specifications
- Project engineering of visualization
- Programming of the entire software for simultaneous stockpiling, stock transfer and stock removal
- Programming of the exchange of coordination data to the silo plant 1 and to the central data base server
- Planning and realisation of different electrical reconstructions
- Mechanical construction of the level sensors
- Production supervising and instructions



## Plant Configuration

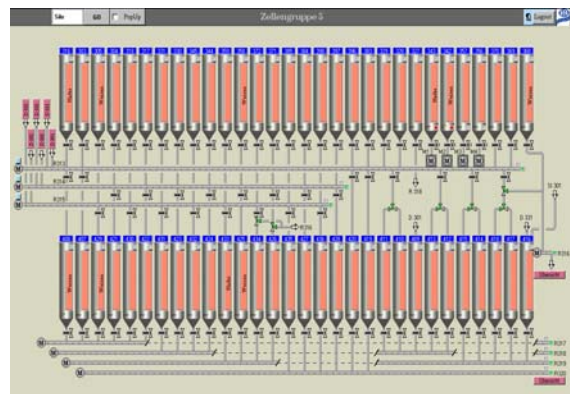
- Server and Cold-Stand-By-Server
- 2 operator stations, thereof 1 with split screen-technology
- Connection to the ERP - system
- Connection of more than 1500 I/O via PROFIBUS-DP to the control software with more than 30 PROFIBUS-DP-interfaces
- Integration of 3 balances for bulk solids
- Most modern visualisation for optimal plant overview



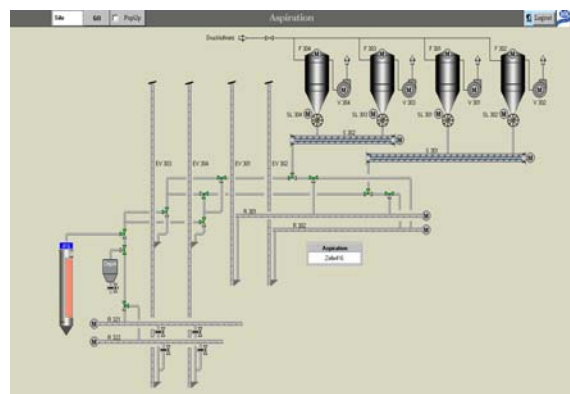
*Silo Control 3 / Overview*

## Electrical Retrofits

- Modification of 8 pneumatic switchgear cabinets
- Complete re-cabling of all MCC – cabinets
- Exchange of 22 PCC – cabinets
- Exchange of all initiators like position switches, speed monitoring devices etc.
- Re-installation of bus-system, maintenance switches, level sensors
- Re-installation of optical fibers to the adjoining plants
- Demounting of old installations and old switchgear cabinets
- Re-commissioning after all reconstruction works within only two weeks



*1 von 5 cell groups*



*Aspiration*

In compliance with your wishes, we realize process engineering subprocesses as well as entire plants for ready occupancy from the planning to the after sales service.

### **SCHMID AUTOMATION AG, CH-9001 St.Gallen**

Moosmühlestr. 8  
CH-9001 St. Gallen

T +41 (0)71 272 33 40  
F +41 (0)71 272 33 30  
[www.schmidag.ch](http://www.schmidag.ch)

### **SCHMID AUTOMATION GMBH, D-86154 Augsburg**

Hirtenmahdweg 10  
D-86154 Augsburg

T +49 (0) 821 218 39 60  
F +49 (0) 821 218 39 57  
[www.schmid-automation.de](http://www.schmid-automation.de)



A Company of the FILTROX-Group

